



## SPATIAL WORKSHOP 2008 RELEASED

March 2008

Spatial Eye announces the release of Spatial Workshop 2008. The release extends the capabilities of Spatial Workshop with a range of advanced functions, such as:

- Advanced reporting and analysis over multiple (spatial) data sources;
- Direct access to data in Smallworld GIS;
- Automatic support of Smallworld configurations, Ace and styles;
- Seamless access to data in Google KML, MrSid, OGC WMS and MS Access in addition to Oracle, Shape and Excel;
- Intelligent and direct translation between data formats
- Export your data to Google Earth.

### ADVANCED REPORTING AND ANALYSIS OVER MULTIPLE DATA SOURCES

#### Analysis for Smallworld, Oracle, Shape, KML and Excel data in one go

The concept of Spatial Business Objects of Spatial Workshop allows you to gather information from different sources and combine it on the fly into new objects that suite your needs.

Because you can use the advanced analysis and reporting functions of Spatial Workshop on the business object level, you can now analyse and report data from multiple sources directly. No complex data translation process is required.

[Read more >](#)

## SPATIAL WORKSHOP 2008

### DIRECT ACCESS TO SMALLWORLD VMDS DATA

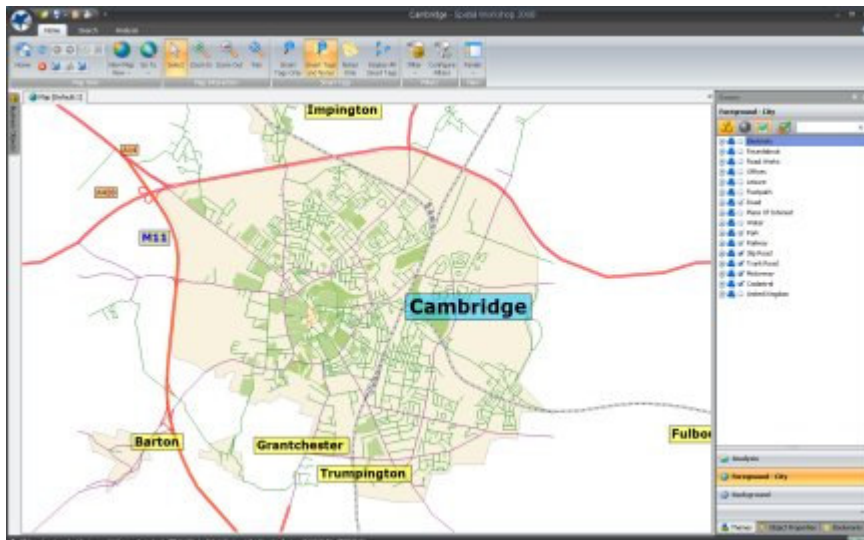
Open up you Smallworld database now from your desktop, as if you were using a Microsoft Office application.

Configure a Spatial Workshop application in less than a minute, using the Smallworld Application Configuration and Styles settings.

Combine and analyse the Smallworld data with data from Oracle, Excel, Shape, Access, etc.

Make reports with Smallworld internal worlds and from any Smallworld versioned data set.

[Read more >](#)



*The Smallworld Cambridge demo database accessed by Spatial Workshop*

### CASE: ONE ACCESSPOINT FOR MULTIPLE SPATIAL SOURCES

Many end users throughout the organization want to use GIS data to solve their day to

#### Subscribe

Sign up for the Spatial Eye Newsletter.

#### Try it

Request a trial version of Spatial Workshop.

#### Interesting links

- > [Spatial Eye](#)
- > [Spatial applications](#)
- > [Spatial aggregation](#)
- > [Data from Smallworld](#)
- > [Oracle and spatial data](#)
- > [Microsoft and spatial data](#)

#### Meet us

[Meet Spatial Eye and partners at upcoming events](#)

#### Contact us

phone:

**+31 655 738363**

[Spatial Eye mail](#)

[Contact form](#)

day problems in a better way. However, until now, they had no way to combine their own data with the GIS data from the asset management department and/or the marketing department. Spatial Workshop 2008 makes it possible now.

In an intuitive way, similar to Microsoft Office 2007, end users can work with all available data in a rich client application. Now they do not need to wait till someone else has completed their analysis, after first loading ad-hoc data which is required for this particular report only. Instead, they open up the project that provides access to the company's databases, drag in their additional data and make the modifications they desire. Without tiresome installations or complicated connections, they just produce the reports they want, where maps are combined with alphanumeric data.

Mr Gerrit Bruins, director of Spatial Eye, comments: "Simplify your world. This means that everyone can work with spatial data from all over the world in the same way as an Excel sheet or PDF file. Geospatial data clearly became mainstream. Just focus on the result you want, rather than the technology!"

[Read more >](#)

### USE DATA NOW ALSO FROM GOOGLE, MR-SID AND OGC WEBSERVICES

Spatial Workshop now makes it very easy to access

- large raster files,
- on-line spatial services,
- Open Geospatial Web Map Services (WMS)
- data in Google KML, the standard spatial data exchange format from Google.

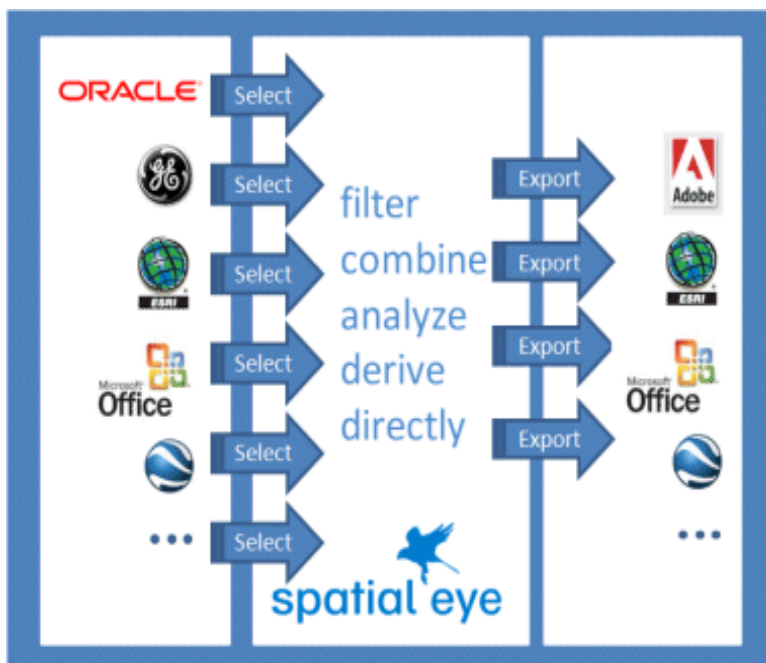
You can now view spatial data exported from Google Earth or other systems now by just a simple mouse click..

[Check out some examples of Spatial Workshop and Google Earth >](#)

### EXCHANGE SMART INFORMATION

Access data within multiple sources. Combine, filter, analyse and then transparently export business object data. This is one of the things you can Spatial Workshop for. Imagine that you:

- open a map in ESRI Shape format, select data and export it to Excel,
- open a Smallworld database, link external data, export it to Shape,
- open a Smallworld and Oracle database, publish combined data to Google Earth.



[Read more >](#)

### NEWS and EVENTS

- [Spatial Data Solutions reseller for Southern Africa >](#)
- [Have a look at Spatial Workshop at one of our events >](#)

---

## SPATIAL EYE

[www.spatial-eye.com](http://www.spatial-eye.com)

Copyright 2008, Spatial Eye.  
All rights reserved.  
Trademarks of Spatial Eye BV.

*The Spatial Eye newsletter is a periodic e-magazine targeted to users of geo-spatial Information and Spatial Eye products. The Spatial Eye Newsletter brings you news and trends in geo spatial applications.  
If you wish to no longer receive this newsletter, please click the unsubscribe link below.*

*unsubscribe for the English newsletters, HOWEVER keep my subscription in Dutch  
unsubscribe for all newsletters*

---