



## spatial workshop 2.1 is available now

Check out the features of the latest version of Spatial Workshop:

- Create marvelous thematic maps of all your spatial data
- Access your spatial data through Smart Tags
- Use the strength of Google to locate your information
- Activate Spatial Workshop from within your existing IT systems
- Use your Smallworld configurations within Spatial Workshop

### Thematic mapping over multiple data sources

Spatial Workshop 2.1 now allows you to present your data from different systems in one go. You can now create compelling maps that give a transparent view of data within Oracle, Smallworld, ESRI, Microsoft Office and other systems.

[Read more about Thematic Mapping >](#)



*Thematic Maps made within Spatial Workshop*

### access spatial data through smart tags

You can save time by using Smart Tags within Spatial Workshop. Smart Tags are pins on a map that indicate that additional information is available. When you click on a

[Subscribe](#)

Sign up for the Spatial Eye Newsletter.

[Try it](#)

Request a trial version of Spatial Workshop.

### Interesting links

- > [Spatial Eye](#)
- > [Spatial applications](#)
- > [Spatial aggregation](#)
- > [Data from Smallworld](#)
- > [Oracle and spatial data](#)
- > [Microsoft and spatial data](#)

### Meet us

[Meet Spatial Eye and partners at upcoming events](#)

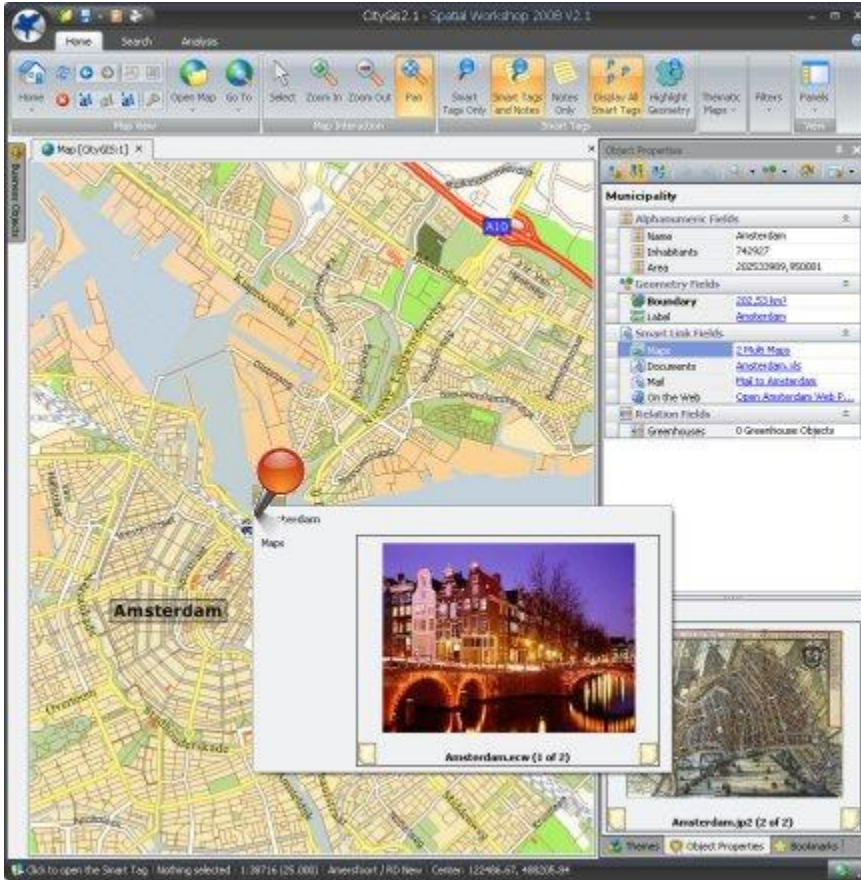
### Contact us

phone: +31 655  
738363

[Spatial Eye mail](#)

Smart Tag Spatial Workshop will show all additional information that is available for the objects in the map, like maps, photos, raster images or start any application on your machine.

[Read more about Spatial Eye Smart Tags >](#)

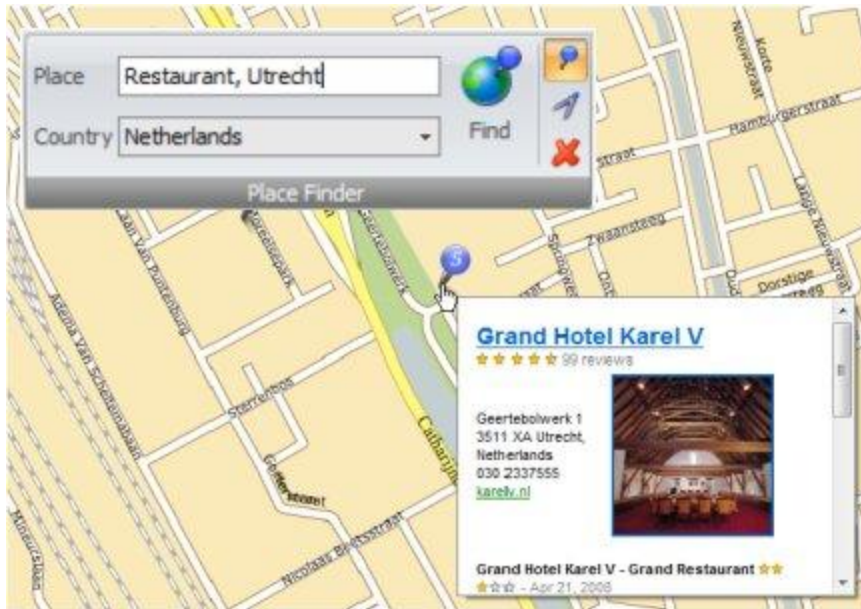


*Smart Tags within Spatial Workshop*

### use google to locate information within Spatial Workshop

Spatial Workshop 2.1 now offers you the strength of Google to find information within the context of your own Spatial Workshop applications. You type a place into Place Finder and Spatial Workshop displays Smart Tags and a list of all locations found by the Google Location service.

[Spatial Read more about Eye Services Google >](#)



*Place Finder and Google query results within Spatial Workshop*

### **activate spatial workshop from your other it-systems**

When you are working with your Asset Management system, how often does it happen that you would like to know where your assets are?

Or when a customer calls, how often would you like to see where the address is on a map without the need to start up another system?

Or do you need to see changes in you infrastructures on a map immediately?

Version 2.1 of Spatial Workshop now offers you the possibility to activate Spatial Workshop functionality from within your other IT-systems.

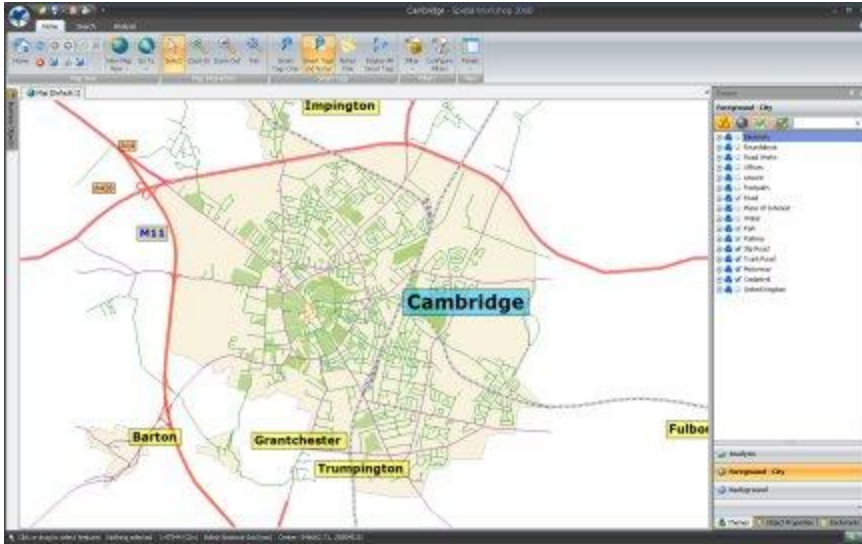
[Read more about Spatial Eye Activator >](#)

### **use your Smallworld configuration within Spatial WorkShop**

With Spatial Workshop you can integrate data from different Geographic Information Systems (GIS).

Smallworld GIS users can now automatically use the styles and map configurations from their Smallworld applications. Just mark the "Import Styles and ACE configuration" tick box in the Spatial Workshop configuration wizard and you automatically import the style and ACE settings from Smallworld into Spatial Workshop.

[Read more about Using Smallworld data >](#)



The Smallworld Cambridge demo database accessed by Spatial Workshop

---

## Spatial Eye

[www.spatial-eye.com](http://www.spatial-eye.com)

*Copyright 2008, Spatial Eye.  
All rights reserved.  
Trademarks of Spatial Eye BV.*

*The Spatial Eye newsletter is a periodic e-magazine targeting users of geo-spatial Information and Spatial Eye products. The Spatial Eye Newsletter brings you news and trends in geo spatial applications.*

*If you wish to no longer receive this newsletter, please click the unsubscribe link below.*

[Unsubscribe from this newsletter mailing](#)

---